

# CRUMA 670FL



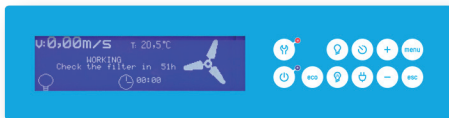
**CRUMA vertical laminar flow hood** with ISO Class 4 air purity creates a **sterile environment** free of particles and/or microorganisms that ensures the reliability of any test inside the hood. It incorporates a HEPA H-14 absolute filter whose minimum efficiency is of 99.995% for particles of 0.3 µm, and a 15W UV germicide lamp designed to decontaminate the hood before and after each use.

It includes **new important technical features** in order to satisfy the operator in his everyday task and his protection at work, taking care of the environment as well. All this with the same quality as always and up to 10 year guarantee.

## USES

- ✓ Laboratory food industries in general
- ✓ Transfer of drugs in the pharmacy department
- ✓ Hematology and clinical analysis
- ✓ Filled with antibiotics and injectable drugs (except cytostatic) microscopic analysis
- ✓ Tissue culture bags reconstitution of parenteral methods of assisted fertilization techniques
- ✓ Micropropagation, Plant cell cultures, Water quality control, manufacturing of electronic devices...

## NEW FEATURES



### More information on the new LCD display

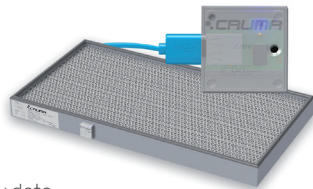
- ✓ New size 127x34mm display
- ✓ Type of filter installed, working hours and next revision date
- ✓ Countdown timer, clock and calendar

### New features and components

- ✓ Initial cycle flow adequacy and final purge cycle
- ✓ Fault LED
- ✓ Control of air flow through Microprocessor
- ✓ HEPA filters with electronic chip
- ✓ LED illumination

### New alarms and scheduled warnings

- ✓ Next validation warning
- ✓ Few hours of filter life warning
- ✓ Countdown timer warning
- ✓ Expired filter alarm by hours & by date
- ✓ Equipment without filter alarm



## MAIN FEATURES

- ✓ **Manufacture:** outer surfaces made of cold rolled steel gray / ocher coating, stoveenamelled, resistant to the chemical compounds used for sterilization
- ✓ **Worktop:** the surface of the working chamber is in secured safety glass
- ✓ **Absolute HEPA H-14 filter** with flow equalizer, efficiency greater than 99.995% on 0.3 micron particles
- ✓ **Fan:** centrifugal double suction, suitable to provide laminar flow in the workspace
- ✓ **Control panel with soft-touch keyboard** and switch for LED and UV lamps; the air speed is kept at a constant rate thanks to the HEPA filter which is electronically self-regulated, electronic control air speed and control key to slow it down
- ✓ **Lighting:** LED lamp placed in the central part of the cabinet, for a better light distribution over the working surface

## TECHNICAL FEATURES

Number of filters	1
Number of IP44 fans	1
Average face velocity	0,35 m/s
Total electrical power consumption	55 W
Voltage-Frequency	110-220 V / 50-60 Hz
LED light intensity	1300 lx
UV germicidal lamp	15 W
Noise level	57 ±3 dB
<b>Packaging:</b> 100% recycled wooden box with international phytosanitary certificate	Volume 0,28 m <sup>3</sup> Weight 65 Kg

It is not a typographical error,  
**10 year warranty**

Because we are convinced of the quality of our products.



\*More information [www.cruma.es](http://www.cruma.es)

Well done, well shipped.  
**Our responsible packaging**

Wood box 100% recyclable with international phytosanitary certificate.



Do you need help or  
**technical assistance?**

Contact your distributor or call us if you have any questions or need technical support, spare parts, maintenance service...

**+34 93 370 61 62**